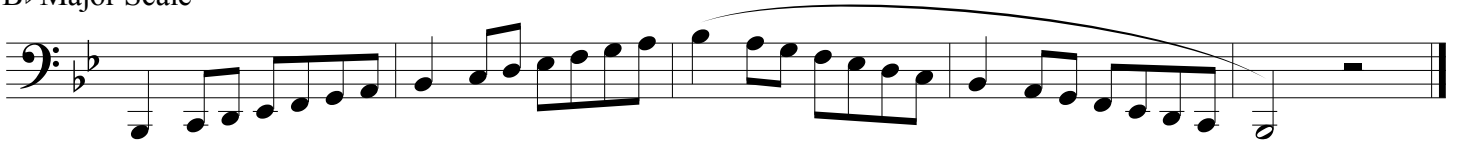


# Region 24 Middle School All-Region Scales

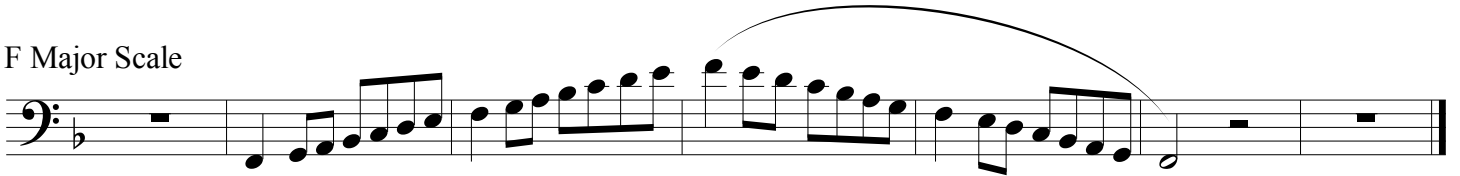
Bassoon

Revised April 2016

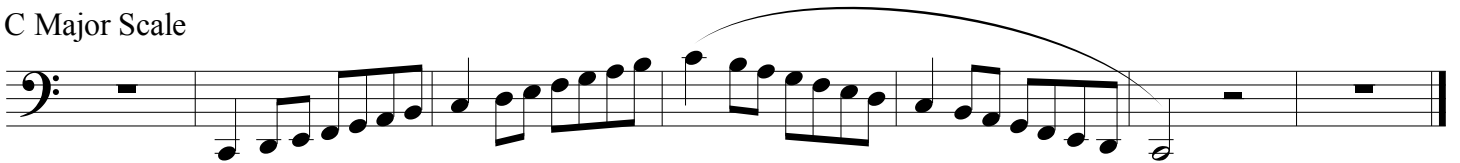
B $\flat$  Major Scale



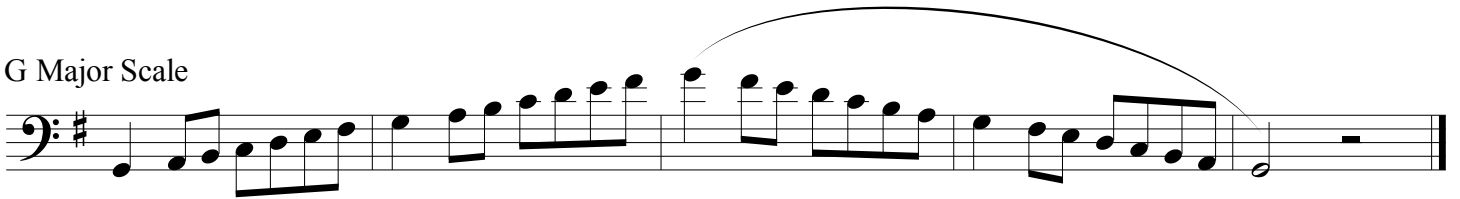
F Major Scale



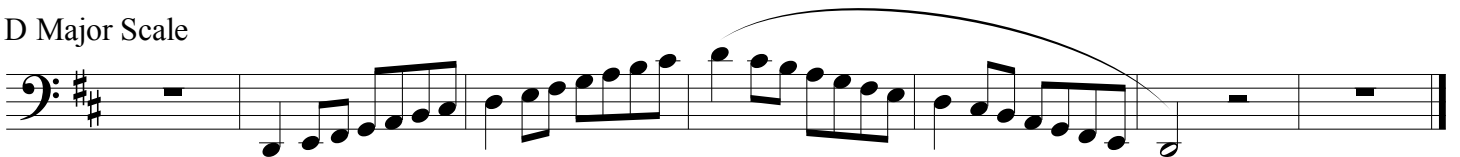
C Major Scale



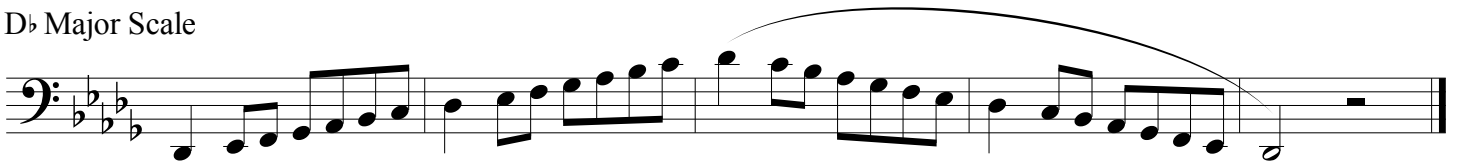
G Major Scale



D Major Scale



D $\flat$  Major Scale



A $\flat$  Major Scale

Musical notation for the A $\flat$  Major Scale in bass clef. The scale is written in a single line with a key signature of two flats (B $\flat$  and E $\flat$ ). The notes are: A $\flat$ , B $\flat$ , C, D, E, F, G, A, B, A, G, F, E, D, C, B $\flat$ , A $\flat$ . A slur covers the ascending and descending lines.

E $\flat$  Major Scale

Musical notation for the E $\flat$  Major Scale in bass clef. The scale is written in a single line with a key signature of three flats (B $\flat$ , E $\flat$ , and A $\flat$ ). The notes are: E $\flat$ , F, G, A, B, C, D, E, F, G, A, B, C, D, E, F, E $\flat$ , D, C, B, A, G, F, E $\flat$ . A slur covers the ascending and descending lines.

B $\flat$ -G Chromatic

Musical notation for the B $\flat$ -G Chromatic scale in bass clef. The scale is written in two lines. The first line contains the ascending chromatic scale from B $\flat$  to G: B $\flat$ , B, B $\sharp$ , C, C $\sharp$ , D, D $\sharp$ , E, E $\sharp$ , F, F $\sharp$ , G. The second line contains the descending chromatic scale from G to B $\flat$ : G, F $\sharp$ , F, E $\sharp$ , E, D $\sharp$ , D, C $\sharp$ , C, B $\sharp$ , B, A $\sharp$ , A, G $\sharp$ , G $\flat$ , F $\flat$ , E $\flat$ , D $\flat$ , C $\flat$ , B $\flat$ . A slur covers the entire chromatic scale.