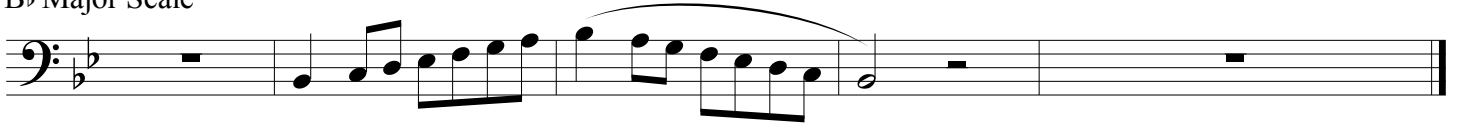


Region 24 Middle School All-Region Scales

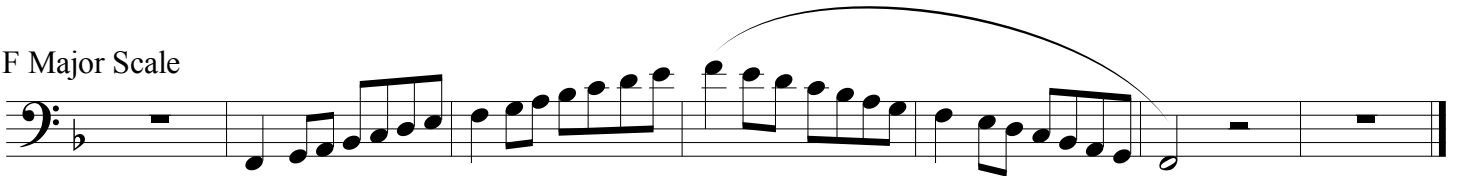
Trombone
Euphonium

Revised April 2016

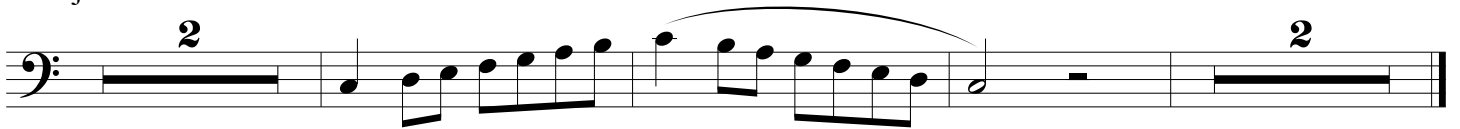
B \flat Major Scale



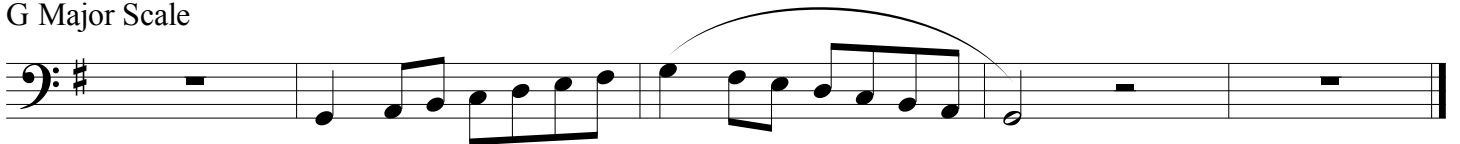
F Major Scale



C Major Scale



G Major Scale



D Major Scale



D \flat Major Scale



A \flat Major Scale

Musical notation for the A \flat Major Scale in bass clef. The scale is written in a single line with a key signature of two flats (B \flat and E \flat). The notes are: A \flat , B \flat , C, D, E, F, G, A, B, A, G, F, E, D, C, B \flat , A \flat . The first two notes are followed by a whole rest. The final two notes are followed by a whole rest. A slur covers the ascending and descending eighth-note runs.

E \flat Major Scale

Musical notation for the E \flat Major Scale in bass clef. The scale is written in a single line with a key signature of three flats (B \flat , E \flat , and A \flat). The notes are: E \flat , F, G, A, B, C, D, E, F, G, A, B, C, D, E, F, E \flat , D, C, B, A, G, F, E \flat . The first and last notes are followed by a whole rest. A slur covers the ascending and descending eighth-note runs. The number '2' is written above the first and last notes, indicating a double-measure rest.

F-F Chromatic Scale

Musical notation for the F-F Chromatic Scale in bass clef. The scale is written in two lines. The first line contains the ascending chromatic scale: F, F \sharp , G, G \sharp , A, A \sharp , B, B \sharp , C, C \sharp , D, D \sharp , E, E \sharp , F. The second line contains the descending chromatic scale: F, E \flat , D \flat , C \flat , B \flat , A \flat , G \flat , F \flat , E \flat , D \flat , C \flat , B \flat , A \flat , G \flat , F \flat , E \flat , D \flat , C \flat , B \flat , A \flat , G \flat , F \flat , E \flat , D \flat , C \flat , B \flat , A \flat , G \flat , F \flat . A slur covers the entire two-line chromatic scale.