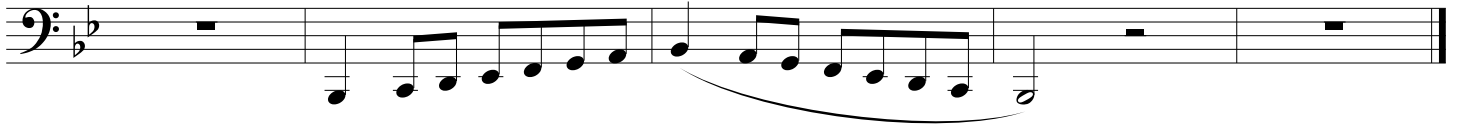


Region 24 Middle School All-Region Scales

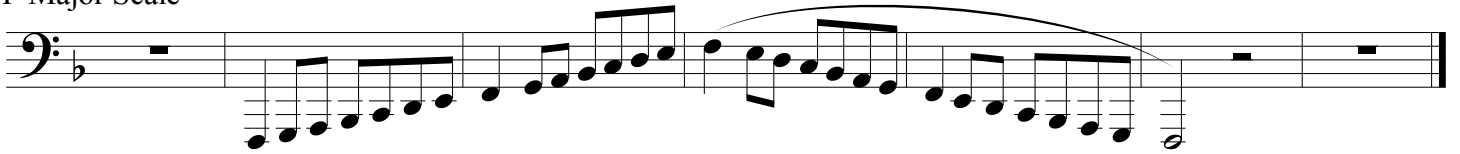
Tuba

Revised April 2016

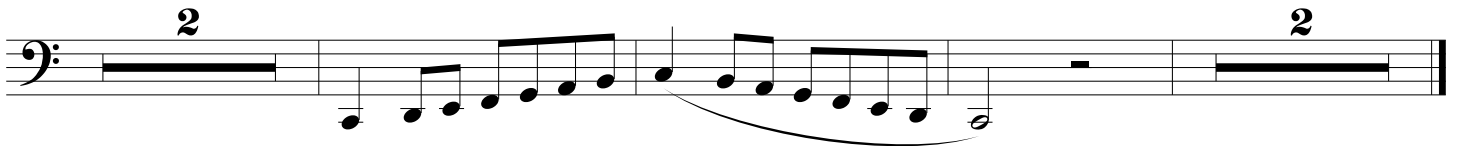
B \flat Major Scale



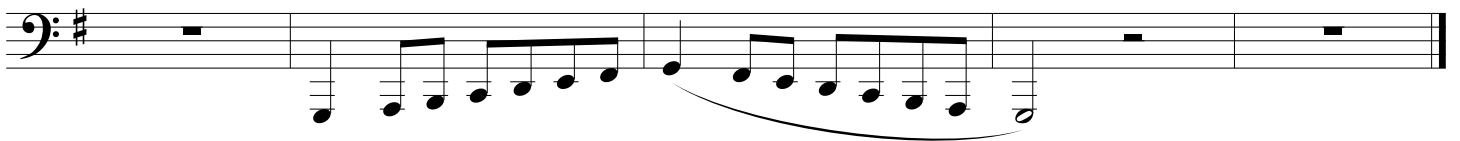
F Major Scale



C Major Scale



G Major Scale



D Major Scale



D \flat Major Scale



A \flat Major Scale

Musical notation for the A \flat Major Scale in bass clef. The scale is written in a single line with a key signature of two flats (B \flat and E \flat). The notes are: A \flat (two ledger lines), G \flat (three ledger lines), F \flat (three ledger lines), E \flat (three ledger lines), D \flat (three ledger lines), C \flat (three ledger lines), B \flat (three ledger lines), A \flat (three ledger lines), G \flat (three ledger lines), F \flat (three ledger lines), E \flat (three ledger lines), D \flat (three ledger lines), C \flat (three ledger lines), B \flat (three ledger lines), A \flat (three ledger lines). The first and last notes are whole notes, and the middle notes are quarter notes. A slur covers the notes from G \flat to C \flat .

E \flat Major Scale

Musical notation for the E \flat Major Scale in bass clef. The scale is written in a single line with a key signature of three flats (B \flat , E \flat , and A \flat). The notes are: E \flat (three ledger lines), D \flat (three ledger lines), C \flat (three ledger lines), B \flat (three ledger lines), A \flat (three ledger lines), G \flat (three ledger lines), F \flat (three ledger lines), E \flat (three ledger lines), D \flat (three ledger lines), C \flat (three ledger lines), B \flat (three ledger lines), A \flat (three ledger lines), G \flat (three ledger lines), F \flat (three ledger lines), E \flat (three ledger lines). The first and last notes are whole notes with a '2' above them, and the middle notes are quarter notes. A slur covers the notes from G \flat to C \flat .

F-F Chromatic Scale

Musical notation for the F-F Chromatic Scale in bass clef. The scale is written in two lines. The first line shows the ascending chromatic scale from F \flat (three ledger lines) to F \sharp (three ledger lines). The second line shows the descending chromatic scale from F \sharp (three ledger lines) to F \flat (three ledger lines). All notes are quarter notes. A slur covers the entire two-line scale.